

# THANGAVELU COLLEGE OF SCIENCE AND MANAGEMENT

Rajivgandhi salai,Karapakkam,Chennai-600 097

## (MBA PROGRAMME)

### MANDATORY DISCLOSURE

Mandatory Disclosure by Institutions running AICTE approved Engineering/Technology/Pharmacy programmes to be included in their respective Information Brochure, displayed on their website and to be submitted to AICTE every year latest by 30<sup>th</sup> April together with its URL

**The following information is to be given in the Information Brochure besides being hosted on the Institution's official Website.**

*"The information has been provided by the concerned institution and the onus of authenticity lies with the institution and not on AICTE."*

#### I. NAME OF THE INSTITUTION

- THANGAVELU COLLEGE OF SCIENCE AND MANAGEMENT  
Rajiv Gandhi Salai, Karapakkam.  
Chennai – 600 097  
Phone No:044-24501377,24501045  
Fax No:044-24500538  
E.Mail:tcsmpet@hotmail.com

#### II. NAME & ADDRESS OF THE DIRECTOR

- Dr.B Parthiban, Ph.D,
- THANGAVELU COLLEGE OF SCIENCE AND MANAGEMENT  
Rajiv Gandhi Salai, Karapakkam.  
Chennai – 600 096  
Phone No:044-24501377,24501045  
Fax No:044-24500538  
E.Mail:tcsmpet@hotmail.com

### III. GOVERNANCE

- ❖ Members of the Board and their brief background
  
- ❖ Members of Academic Advisory Body

#### **GOVERNING COUNCIL**

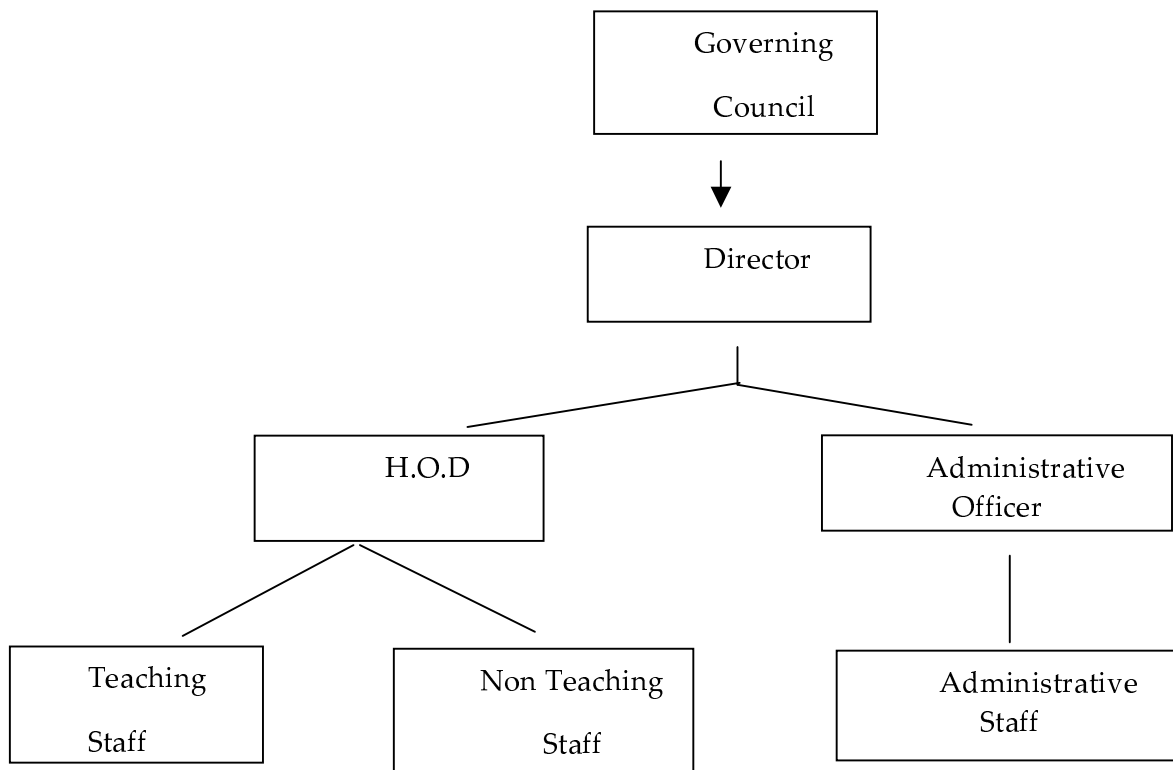
##### **Composition:**

<b>SL.NO</b>	<b>Name</b>	<b>Position</b>
<b>1.</b>	<b>Mr.K.V.Thangka Balu</b>	<b>Chairman</b>
<b>2.</b>	<b>Mrs.Jayanthi Thanga Balu</b>	<b>Chairperson</b>
<b>3.</b>	<b>Mr.K.T.Karthick</b>	<b>Member</b>
<b>4.</b>	<b>Mr.N.V.Vajram</b>	<b>Member</b>
<b>5.</b>	<b>Prof.S.Ramani</b>	<b>Member</b>
<b>6.</b>	<b>The regional Officer(SRO),AICTE</b>	<b>Member</b>
<b>7.</b>	<b>A Member Nominated by the Concerned Regional Council</b>	<b>Member</b>
<b>8.</b>	<b>A Member Nominated by University of Madras</b>	<b>Member</b>
<b>9.</b>	<b>Director of Technical Education</b>	<b>Nominee</b>
<b>10.</b>	<b>Tamilnadu Government-Member</b>	<b>Nominee</b>
<b>11.</b>	<b>Dr..B Parthiban</b>	<b>Member Secretary</b>

- ❖ Frequency of the Board Meetings and Academic Advisory Body

4 times yearly

- ❖ Organizational chart and processes



- ❖ Nature and Extent of involvement of faculty and students in academic affairs/improvements

1. Presentation of teaching materials with multimedia facilities in accordance with prescribed syllabus
2. Evaluate the student performance by conducting periodical test and model exam
3. A group of 20 students assigned to a faculty member to monitor their performance in curricular and co curricular activities.

- ❖ Mechanism/Norms & Procedure for democratic/good Governance

1. Open House Meeting with students by chairperson and Principal
2. Monthly report card of Students are sent to the parents

3. Yearly target achievements
4. Continuous performance monitoring

❖ Student Feedback on Institutional Governance/faculty performance

Students are assessing the teachers governing through the appraisal system the process are made transparent so that student may offer constructive feedback to adopt in future course.

❖ Grievance redressal mechanism for faculty, staff and students

❖ Established the grievance redressal committee to take care of the grievances of student, faculty and staff members.

#### IV. PROGRAMMES

❖ Name of the Programmes approved by the AICTE

MBA – Master of Business Administration

❖ Name of the Programmes accredited by the AICTE

Applied

❖ For each Programme the following details are to be given:

- Name : MBA – Master of Business Administration
- Number of seats :60
- Duration : 2 Years
- Cut off mark/rank for admission during the last three years
- 2008-2009 : 13.8
- 2007-2008 : 14.2
- 2006-07 : 8.25
- Fee : Tuition Fee : Rs.25,000 pa
- Placement Facilities

Placement cell is functioning effectively and campus interviews are conducted regularly by various companies

- Campus placement in last three years with minimum salary, maximum salary and average salary

Year	No of Students Placed	Minimum Salary	Maximum Salary	Average Salary
2009	14	15000	22000	18500
2008	37	18000	22000	20000
2007	34	15000	19000	16000

- ❖ Name and duration of programme(s) having affiliation/collaboration with Foreign University(s)/Institution(s) and being run in the same Campus along with status of their AICTE approval. If there is foreign collaboration, give the following details:

NOT APPLICABLE

#### V. FACULTY

- ❖ Branch wise list faculty members:

Branch	Permanent Faculty	Visiting Faculty	Adjunct Faculty	Guest Faculty	Permanent Faculty: Student Ratio
MBA	10	--	--	--	1:15

- ❖ Number of faculty employed and left during the last three years

Employed – 35

Left - 16

**PROFILE OF DIRECTOR/~~PRINCIPAL~~ WITH QUALIFICATIONS, TOTAL EXPERIENCE, AGE AND DURATION OF EMPLOYMENT AT THE INSTITUTE CONCERNED**

#### Annexure – I

WHETHER STUDENT ASSESMENT OF FACULTY IS IN FORCE – YES

#### 12. FEE

- ❖ Details of fee, as approved by State fee Committee, for the Institution.

Rs.25,000 pa

- ❖ Time schedule for payment of fee for the entire programme.

At the time of Admission

- ❖ No. of Fee waivers granted with amount and name of students  
12 Students
- ❖ Number of scholarship offered by the institute, duration and amount  
5 Scholarships
- ❖ Criteria for fee waivers/scholarship.  
Poor / Excellent Academic Record
- ❖ Estimated cost of Boarding and Lodging in Hostels.  
Rs.40,000 pa

#### VII. ADMISSION

- ❖ Number of seats sanctioned with the year of approval.

Branch	Sanctioned Intake	Year of Approval
MBA	60	2009-2011

- ❖ Number of students admitted under various categories each year in the last three years.

Branch	2008-2009			2007-2008			2006-07		
	DOTE	MGT	Lap	DOTE	MGT	Lap	DOTE	MGT	Lap
MBA	37	23	-	15	30	14	4	30	26

- ❖ Number of applications received during last two years for admission under Management Quota and number admitted.

Branch	2008-2009		2007-08	
	App Received	Admitted	App Received	Admitted
MBA	40	23	82	44

#### VIII. ADMISSION PROCEDURE

- ❖ Mention the admission test being followed, name and address of the Test Agency and its URL (website).

1.TANCET – Conducted By ANNA UNIVERSITY – for Govt quota  
website:[www.annauniv.edu](http://www.annauniv.edu)

2.CET – Conducted by Consortium of self-financing professional, arts and Science colleges in Tamilnadu – for Management quota  
website:[www.tnsfconsortium.org](http://www.tnsfconsortium.org)

- ❖ Number of seats allotted to different Test Qualified candidates separately [AIEEE/CET (State conducted test/University tests)/Association conducted test]

Admission under management Quota under Process for 2008 - 09  
2008-09 :

Branch	TANCET	CET
MBA	13.8	59.54

- ❖ Calendar for admission against management/vacant seats:
  - Last date for request for applications : 31.08.2009
  - Last date for submission of application. : 31.08.2009
  - Entrance Test : 13.09.2009
  - Dates for announcing final results. :23-09-2009
  - Release of admission list (main list and waiting list should be announced on the same day) : 23-9-2009
  - Date for acceptance by the candidate (time given should in no case be less than 15 days) : 10.10.2009
  - Last date for closing of admission. : 10.10.2009
  - Starting of the Academic session. : 07.09.2009
  - The waiting list should be activated only on the expiry of date of main list.
  - The policy of refund of the fee, in case of withdrawal, should be clearly notified.

#### IX.CRITERIA AND WEIGHTAGES FOR ADMISSION

- ❖ Describe each criteria with its respective weightages i.e. Admission Test,GD,Interview marks in qualifying examination etc.
- ❖ Admission Test – 100                      Total – 100 Marks
- ❖ Mention the minimum level of acceptance, if any.
- ❖ Mention the cut-off levels of percentage & percentile scores of the candidates in the admission test for the last three years.

- ❖ Display marks scored in Test etc. and in aggregate for all candidates who were admitted.

**Item No I - IX must be given in information brochure and must be hosted as fixed content in the website of the Institution.**

**The Website must be dynamically updated with regard to XII–XV.**

#### **X.APPLICATION FORM**

- ❖ Downloadable application form, with online submission possibilities.

#### **XI. LIST OF APPLICANTS**

- ❖ List of candidates whose applications have been received along with percentile/percentage score for each of the qualifying examination in separate categories for open seats. List of candidates who have applied along with percentage and percentile score for Management quota seats.

**The Last Date for admission of students admitted through Single Window System is fixed as 04.09.2009. The Admission process is yet to complete and the details of students admitted during 2009 - 2010 will be furnished in our Web site in due course of Time.**

#### **XII. CRITERIA FOR GD/PERSONAL INTERVIEW**

- ❖ Norms adopted for calling the candidates for Group Discussion/Personal Interview. (It has to be strictly in order of merit.)
- ❖ Attributes for evaluation in GD/Interview.

#### **XIII. RESULTS**

- ❖ Composition of selection team for admission under Management Quota with the brief profiles of members (This information be made available in the public domain after the admission process is over)

Chairman,Principal and All HOD's

- ❖ Score of the individual candidates admitted arranged in order of merit.

**The Last Date for admission of students admitted through Single Window System is fixed as 04.09.2009. The Admission process is yet to complete and the details of students admitted during 2009-2010 will be furnished in our Web Site**

**In due course of Time**

- ❖ List of candidates who have been offered admission.

**The Last Date for admission of students admitted through Single Window System is fixed as 04.09.2009. The Admission process is yet to complete and the details of students admitted during 2009-2010 will be furnished in our Web Site**

**In due course of Time**

- ❖ Waiting list of the candidates in order of merit to be operative from the last date of joining of the first list candidates.
- ❖ List of the candidates who joined within the date, vacancy position in each category before operation of waiting list.

#### **XV. INFORMATION ON INFRASTRUCTURE AND OTHER RESOURCES AVAILABLE**

##### **LIBRARY:**

- Number of Library books/Titles/Journals available (programme-wise)

S.No	Branch	No of Title	No of Volume	No of Journal	
1	MBA	3286	15027	19	17

- List of online National/International Journals subscribed.
- E-Library facilities – Subscribed for E-Journals through INDEST – AICTE Consortium

DELNET (AICTE)

##### **LABORATORY:**

For each Laboratory

- List of Major Equipment/Facilities

- List of Experimental Setup

##### **COMPUTING FACILITIES:**

- Number and Configuration of Systems  
65 Nos PIV- 65
- Total number of systems connected by LAN

65 Nos

- Total number of systems connected to WAN

65 Nos

- Internet bandwidth

2 mbps BSNL

- Major software packages available

As per Anna University syllabus all the software packages available

- Special purpose facilities available

#### **WORKSHOP:**

- List of facilities available.

##### Games and Sports Facilities

Cricket

Football

Chess

Volleyball

Carrom

Batminton

Kho-kho

Kabadi

Tennis

Table tennis

Etc.,

##### Extra Curriculum Activities

NSS

Youth Red Cross

##### Soft Skill Development Facilities

Number of Classrooms and size of each

5 Nos Each 100 sq m

Number of Tutorial rooms and size of each

3 Nos Each 100 sq m

Number of laboratories and size of each

Number of drawing halls and size of each

Number of Computer Centres with capacity of each

1 No Each 300 sq m

Central Examination Facility, Number of rooms and capacity of each.

10 Rooms Each – 25 Nos Capacity, Able to Conduct the Examination for 250 at a time

Teaching Learning process

- Curricula and syllabi for each of the programmes as approved by the University.

Enclosed CD

- Academic Calendar of the University

- Academic Time Table

#### **Annexure-**

- Teaching Load of each Faculty

Professor – 1 Theory

Asst.Prof – 2 Theory

Lecturer – 2 Theory and 1 Lab

- Internal Continuous Evaluation System and place

For theory and Practical courses other than project work the continuous internal assessment will carry 20 marks consisting of 15 marks for test / Experiments (Average of 2 tests and 1 model Exam) and 5 marks for attendance

For project work the continuous internal assessment carry 40 marks consisting of 35 marks for project assessment (Average of 3 reviews and 5 marks for attendance)

- Students' assessment of Faculty, System in place.

Students are assessing the teachers governing through the appraisal system the process are made transparent so that student may offer constructive feedback to adopt in future course.

For each Post Graduate programme give the following:

- Title of the programme
- Curricula and Syllabi
- Faculty Profile

<b>SI</b>	<b>Name</b>	<b>DESIGNATION</b>	<b>Subject Teaching</b>
1.			
2.			
3.			

- Brief profile of each faculty.
- Laboratory facilities exclusive to the PG programme

**Special Purpose**

- Software, all design tools in case
- Academic Calendar and frame work
- Research focus
  - List of typical research projects.
- Industry Linkage
- Publications (if any) out of research in last three years out of masters projects
- Placement status
- Admission procedure
- Fee Structure
- Hostel Facilities
- Contact address of co-ordinator of the PG programme
  - Name:
  - Address:
  - Telephone:
  - E-mail:

NOTE: Suppression and/or misrepresentation of information would attract appropriate penal action.

